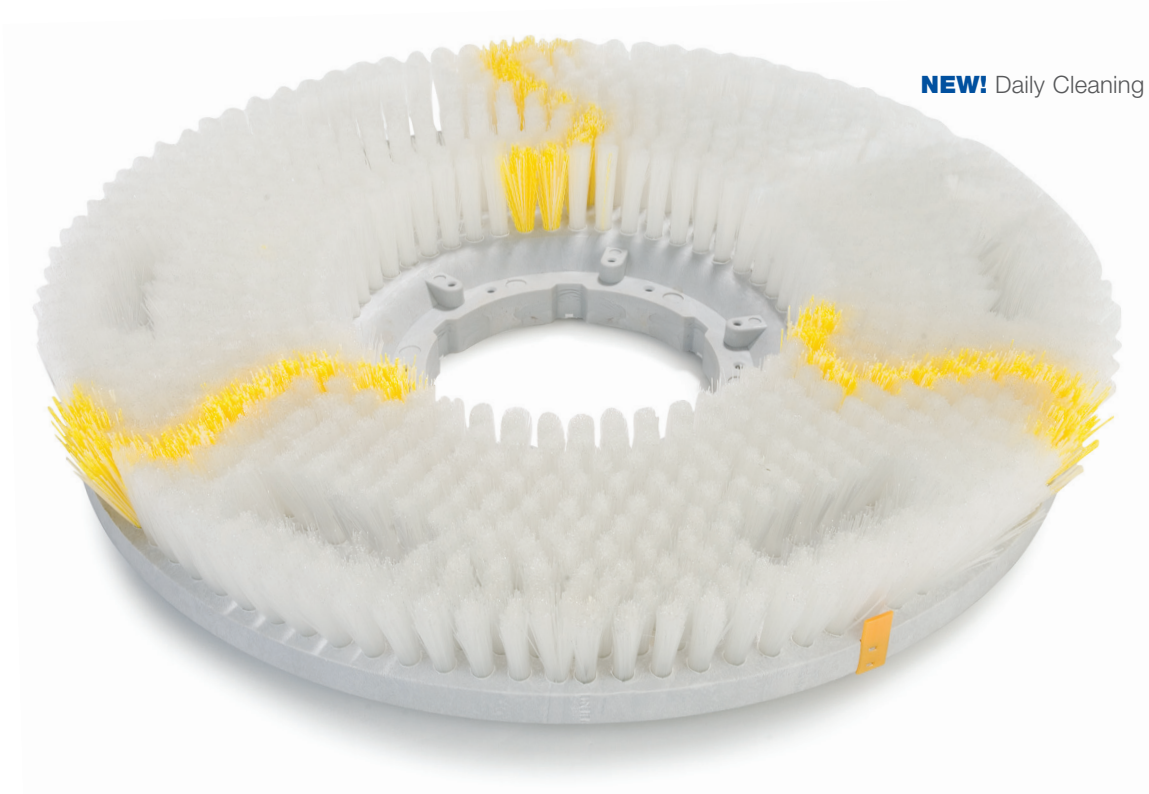
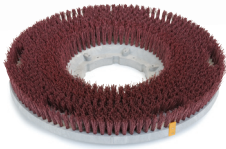


# Colortech™

A Revolution in Revolution



**NEW!** Daily Cleaning Rotary Brush



Carlisle Colortech™ Rotary Brushes are the simple floor care solution. They clean more effectively, using nylon filament impregnated with Silicon Carbide grit. And, we offer a wide selection of rotary brushes to match all of your floor care needs including stripping, scrubbing and general cleaning of high traffic areas in office buildings, malls, schools, hospitals, and stores.

Our newest addition to the Colortech™ Rotary Brush line is the Daily Cleaning Rotary Brush. This brush is specifically designed for daily cleaning of all High Gloss floor surfaces while maintaining the floor shine. Our newly redesigned Rotary Brush block delivers cleaning solutions more efficiently, and a wear indicator has been added to all Colortech™ Brushes.

Save money and be eco-friendly. Find your Rep today.

[www.carlislefsp.com/locatearep/jansan](http://www.carlislefsp.com/locatearep/jansan)

**CARLISLE**  
SANITARY MAINTENANCE PRODUCTS

# Updates and Features

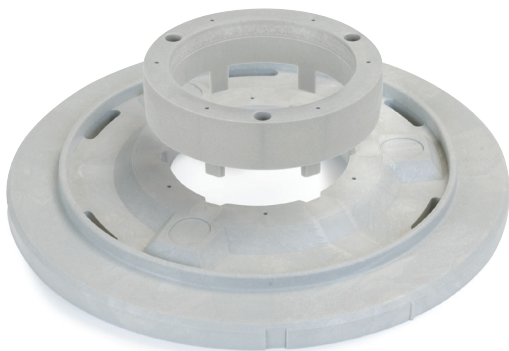
---



## New Showerfeed Rotary Block

Solution feed holes have been redesigned for better usage and a more even coverage. This improvement alone proved to be 10 times more effective at directing solution for utilization.

New interlocking splined design increases the durability of the riser and the block.



## Riser Installation

This image shows how the added splines aid in the installation of the Riser onto the new Rotary Brush Block. Stainless steel fasteners are included to secure the connection between the two.



## Wear Indicator

The Colortech™ Rotary Brush wear indicator is an industry first. It provides a non-marking visual indicator for when it is time to replace the rotary brush. It also insures the brush is cleaning to the best of its ability.

---

## Online Tools

Check out our two online tools which aid in the transition from pads to brushes.

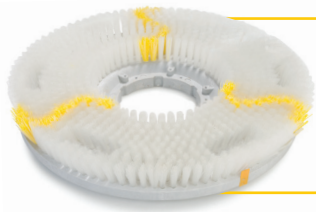


[www.carlislefsp.com/colortech\\_calc](http://www.carlislefsp.com/colortech_calc)



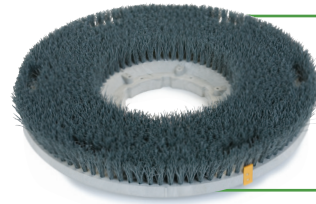
[www.carlislefsp.com/rotarywizard](http://www.carlislefsp.com/rotarywizard)

# Colortech Brush Lineup



## Daily Cleaning For all High Gloss Floor Surfaces

- Specifically designed for daily cleaning of all High Gloss floor surfaces while still maintaining floor shine
- For daily cleaning of ceramic tile, concrete, marble, quarry tile, slate, terrazzo and VCT
- Irregular bristle length to assure cleaning on uneven surfaces
- Available in 11" – 20" diameter showerfeed blocks
- Great for grout lines less than 1/2" in width



## Light Cleaning Replaces Light Green Pad

- For light to medium cleaning of ceramic tile, concrete, marble, quarry tile, rubber floors, slate, terrazzo and VCT
- .018" nylon fibers impregnated with 500 grit silicon carbide
- Available in 11" – 20" diameter showerfeed blocks with 1-1/2" trim
- Great for grout lines less than 1/2" in width



## Cleaning Replaces Red Pads

- For medium to mildly aggressive cleaning of ceramic tile, concrete, marble, non-slip flooring, quarry tile, rubber, slate, terrazzo and VCT
- .022" nylon fibers impregnated with 120 grit silicon carbide
- Available in 11" – 20" diameter showerfeed blocks with 1-1/2" trim
- Great for grout lines less than 1/2" in width



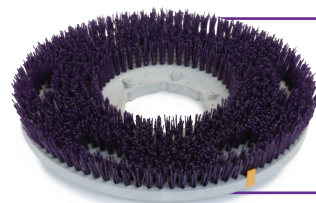
## Scrubbing Replaces Blue Pads

- For aggressive top scrubbing of ceramic tile, rubber, terrazzo and VCT
- .035" nylon fibers impregnated with 180 grit silicon carbide
- Available in 11" – 19" diameter showerfeed blocks with 1-1/2" trim
- Great for grout lines less than 1/2" in width



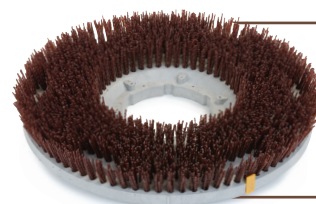
## Stripping Replaces Black Pads

- Excellent for scrubbing of concrete and stripping of quarry tile, terrazzo and VCT
- .050" nylon fibers impregnated with 80 grit silicon carbide
- Available in 9" – 21" diameter showerfeed blocks with 1-1/2" trim
- Great for grout lines 1/2" or greater in width



## Aggressive Stripping Replaces High Productivity Pads

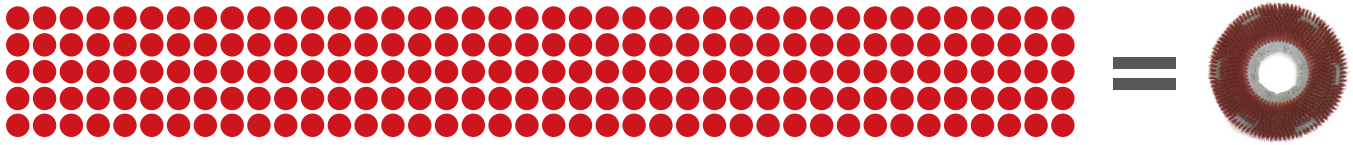
- Aggressive scrubbing of concrete and aggressive stripping of terrazzo and VCT
- .060" nylon fibers impregnated with 46 grit silicon carbide
- Available in 11" – 20" diameter showerfeed blocks with 1-1/2" trim
- Great for grout lines 1/2" or greater in width



## Concrete Floor Care

- Our most aggressive brush for scrubbing heavy soil from concrete in industrial applications
- .070" nylon fibers impregnated with 36 grit silicon carbide
- Available in 11" – 20" diameter showerfeed blocks with 1-1/2" trim

# Only **Color**tech™ Rotary Brushes outlast floor pads more than 200 to 1\*



Rotary Brushes are the simple solution. They clean more effectively, using nylon filament impregnated with Silicon Carbide grit. And, Carlisle offers a wide selection of rotary brushes to match all of your floor care needs including stripping, scrubbing and general cleaning of high traffic areas in office buildings, malls, schools, hospitals, and stores.

*\*Based on an independent 2009 University of Illinois Colortech™ Rotary Brush Study - Durability/Sustainability*

## Advantages over pads:

- Rotary brushes outlast floor pads more than 200 to 1, ultimately saving you time and money
- Reduces packaging, storage and waste
- Lowers labor cost by reducing change out frequency and time
- Eliminates pad tearing and the need to re-center pads
- All rotary brushes utilize durable plastic blocks specially constructed to provide long lasting, superior performance
- Brushes perform well on all types of surfaces including new or old floors with uneven surfaces
- Solution feed design allows cleaning solution to flow through rotary brush block for thorough cleaning